

Testicles (Testes)

The testicles are two small organs that are found inside the scrotum. The testicles are responsible for making sperm and are also involved in producing a hormone called testosterone. Testosterone is an important hormone during male development and maturation – for developing muscles, deepening the voice, and growing body hair.

Urethra

The tube that allows urine to pass outside the body. The brain signals the bladder muscles to tighten, which squeezes urine out of the bladder. At the same time, the brain signals the bladder-opening muscles to relax to let urine leave the bladder through the urethra. When all the signals occur in the correct order, normal urination occurs.

Vas deferens

A tube that carries the sperm out of the scrotal sac where the sperm is stored. The vas deferens connects the epididymis and the urethra together.

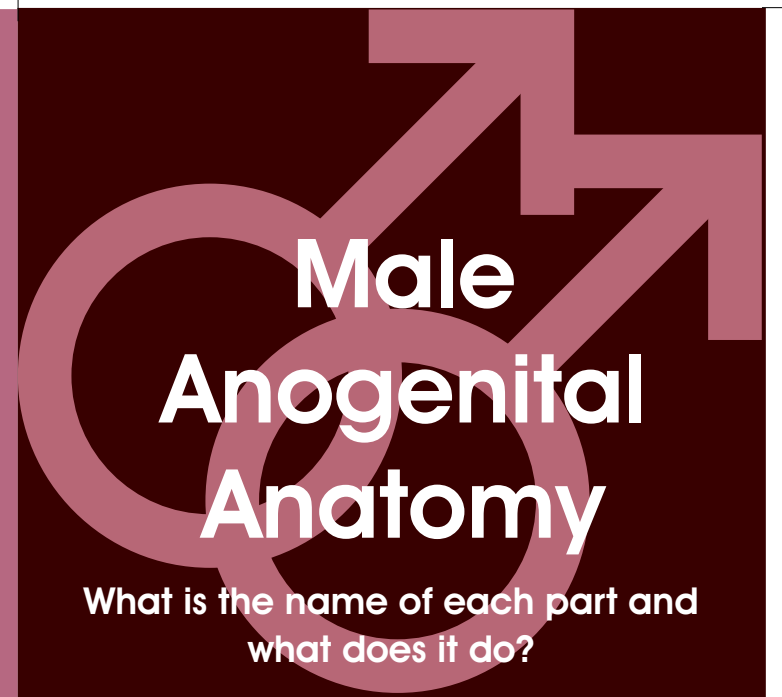
This series of 12 fact sheets including:

- Male Anogenital anatomy
- Anogenital ulcer
- What infections am I at risk of when having sex?
- How to put on a condom?
- Male to Female Genital surgery?
- Genital warts
- Hormone Therapy for Male to Female Transgender People
- Proctitis
- What can happen to me if I am raped?
- Scrotal swelling
- What does an STI & HIV check up involve?
- Urethral discharge



For more information please contact:

Dr. Chavalit Mangkalaviraj,
IUSTI Asia Pacific Branch
Tel: 0-2286-3263
E-mail: chavalit@cottisa.org, tmsstd@bkk.a-net.th
Website: www.cottisa.org



Used with permission from AIDS Concern Hong Kong

Anus

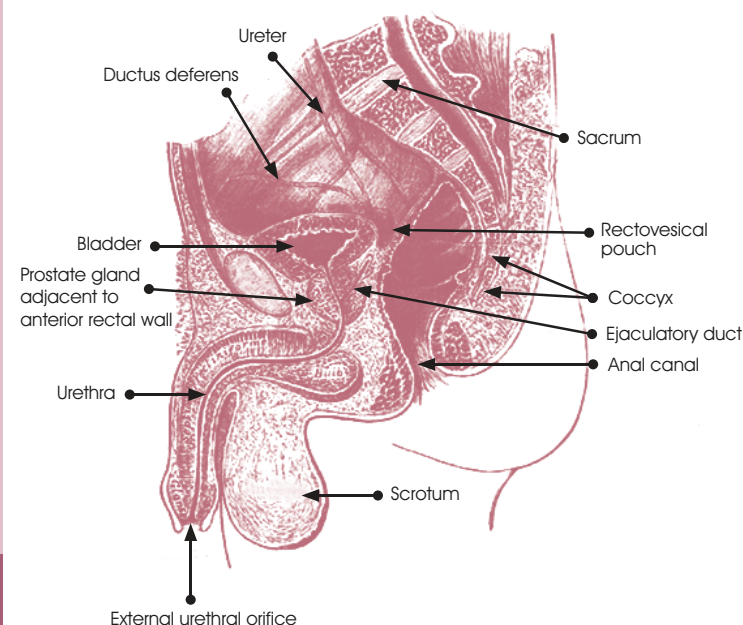
The opening at the end of the digestive tract where bowel contents leave the body. MSM and transgender people often use the anus during sex.

Bladder

A triangular shaped, hollow organ located in the lower abdomen. It is held in place by ligaments that are attached to other organs and the pelvic bones. The bladder stores urine and empties it through the urethra.

Epididymis

A long tube that is located near each testicle (see next page). The epididymis is the tube in which the sperm from the testicles are moved away from the testicles.



Penis

The penis is made up of two parts, the shaft and the glans. The glans is the tip of the penis, while the shaft is the main part of the penis and contains the tube (urethra) that drains the bladder. All boys are born with a foreskin, or a covering over the tip of the penis. Some boys have the foreskin removed during 'circumcision'. Other boys are not circumcised and may have skin that covers the tip of the penis.

Prostate gland

A sex gland in men. It is about 3 cm. across, and surrounds the neck of the bladder and urethra (see next page). The prostate gland secretes a fluid that forms part of the semen - a fluid that carries sperm.

Rectum

The lower end of the large intestine, leading to the anus.

Scrotum

The bag of skin that holds and helps to protect the testicles. The testicles make sperm, and to do this, the temperature of the testicles needs to be cooler than the inside of the body. This is why the scrotum is located outside of the body.